



# COMMUNIQUE

## What's Inside

Helping Women + Changing Lives .....	1-2
October Networking Luncheon .....	3
From Our October Luncheon Sponsor – Kristi Sullivan .....	4
Renew Your Membership Today- In Order to Continue to Receive Member Benefits .....	5
Public Affairs Meetings .....	5
Coffee Connections .....	5
Quarterly Business Book Club .....	6
APW Panties & PJs Happy Hour was a Great Success .....	6
Networking Luncheon Sponsor – Sign Up Now! .....	7
Just Tips! .....	7
<b>NEWS AND INFORMATION:</b>	
Alliance Networking Events, Member News and Information .....	8-9
Business Source .....	10-13
Calendar .....	14



Kerry Hammond

THE ALLIANCE OF PROFESSIONAL WOMEN

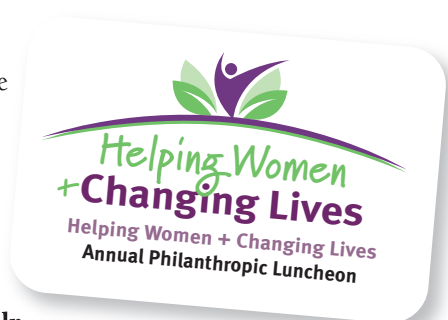
## Executive Director

Kerry Hammond 303-368-4747  
E-Mail: [execdir@apwcolorado.org](mailto:execdir@apwcolorado.org)  
Website: [www.apwcolorado.org](http://www.apwcolorado.org)  
P.O. Box 480384, Denver CO 80248

## Connecting Women Personally, Professionally and Philanthropically

# Helping Women + Changing Lives Luncheon September 10, 2015

The **4th Annual Alliance Foundation Helping Women + Changing Lives Luncheon** is taking place on Thursday, **September 10th**. This annual luncheon is the fundraising event of the year for The Alliance of Professional Women's philanthropic arm, The Alliance Foundation.



### The philanthropic programs funded with your help

**have ranged from local outreach to international aid, in the following three areas:**

- Providing local scholarships at three different colleges in Denver for women obtaining their college degrees later in life; assistance in their junior and senior years.
- Lending a helping hand to some less fortunate in our community such as sponsoring a Literacy Day at CWEE, serving dinners at The Delores Project, Adopt-a-Family for the Holidays at the Arapahoe House, and Happy Hours to benefit Excelsior Youth Center.
- Funding Village Banks which make micro loans available to women in third-world countries, thereby enriching the lives of their families. We have funded 22 Village Banks, thus far through our efforts.

This luncheon **supports all these worthy causes and we cannot do it without your help!** The luncheon is free to attend, and we hope for enough generous donations given at the luncheon to continue to fund these projects in the future.

If you have not signed up for the luncheon through an APW Table Captain, but would like to attend, **please RSVP by contacting SUSIE MOSS** at [alliancefoundation1@gmail.com](mailto:alliancefoundation1@gmail.com). Registration and networking starts at 11:15 am, and our program starts at noon.

If you are unable to attend the Helping Women+Changing Lives luncheon, but would like to contribute to this great cause, please **CLICK HERE** to visit our donation website Colorado Gives. At this website, all you need to do is click "DONATE NOW" to enter your information. You will receive acknowledgement of your donation and tax information as well. We appreciate your support.

*We are grateful for your support, and we look forward to seeing you there!*

# You are Invited!

Please  
Join Us!

Helping Women  
+ Changing Lives

## Thursday, September 10, 2015

Helping Women + Changing Lives  
Annual Philanthropic Luncheon

*benefiting*

The Alliance's Village Bank, Scholarship and Outreach programs

**Time:** 11:30 am 1:00 pm **Location:** PPA Event Center, 2105 Decatur Street, Denver

**Cost:** NO CHARGE to attend



FOR MORE EVENT INFORMATION

OR to find out how to become a sponsor please contact **Susie Moss**  
at [alliancefoundation1@gmail.com](mailto:alliancefoundation1@gmail.com) or **303-886-4848**.



PRESENTED BY



### DIRECTIONS

I-25 to 23rd Avenue Exit #211, West to Clay Street,  
South on Clay Street to 21st Avenue, West on 21st  
Avenue to Decatur Street

**PPA Event Center**  **2105 Decatur Street,**  
is on the corner of 21st Avenue and Decatur Street

 PPA Event Center  23rd Avenue Exit  Downtown Denver

## October Networking Luncheon

Join us on **October 8**, for another **great Networking Luncheon** at **Comedy Works South in the Curtis Ballroom**. The Ballroom boasts a stylish, contemporary décor with views of the Front Range and Denver skyline. The Comedy Works is located at 5345 Landmark Place, Greenwood Village, 80111.

Our events are open to guests; in fact we allow a guest to join us for up to three events, after that we ask you to join our membership to continue.

For new or prospective members, an orientation (to learn more about APW and meet some others) starts at 11 am. Open networking at 11:30, and we sit at noon for lunch and announcements. We will also hear from our October **Luncheon Sponsor KRISTI SULLIVAN**, of **Sullivan Financial Planning, LLC** ([www.sullivanfinancialplanning.com](http://www.sullivanfinancialplanning.com)). There is plenty of time available to network at the tables. We conclude by 1:00 pm.



### Entrée Options:

- Roasted Pumpkin Salad diced roasted pumpkin, kale, red quinoa, candied pecans, blue cheese crumbles & spiced lemon vinaigrette **OR**
- Roasted Salmon with Citrus Butter Sauce served with parmesan risotto and steamed asparagus **OR**
- Jamaican Jerk Chicken served with parmesan risotto and steamed asparagus

**Dessert** will be Mini Ghirardelli Chocolate Brownies

**Cost:** \$35 members; \$45 non-members

**RSVP by:** 5:00 pm, Monday October 5 to attend

**CLICK HERE**  
to Register

### Colorado Facts...

William McGaa, one of the first settlers of Denver, named several downtown streets, one of which was called Wewatta for his original Sioux wife. However, he also named another street, Wazee, after his mistress. Talk about awkward.

Denver was named after Kansas Territorial Governor James Denver in hopes of gaining political favor. However, by the time the town was named, Governor Denver had retired.

**Leadership****EXECUTIVE COMMITTEE****Nancy Thauvette Briggans**

President

Arbonne International

**Chelsey Burns**

Immediate Past President

**Leslie Garske**

President Elect

AXA Advisors

**Stephanie Johnson**

Treasurer

Eat &amp; Think Healthy, LLC.

**Leah Dirks**

Secretary

FirstBank

**Alexandra Tune, At Large**

Deloitte

**Sheila Drew, At Large**

Creative Financial Staffing of Colorado

**Vanda Dyson, At Large**

DYCO Diversified

**BOARD MEMBERS****Nancy Thauvette Briggans**

President

Arbonne International

**Chelsey Burns**

Immediate Past President

White and Steele, PC.

**Leslie Garske**

President Elect

AXA Advisors

**Stephanie Johnson**

Treasurer

Eat &amp; Think Healthy, LLC.

**Leah Dirks**

Secretary

FirstBank

**Alexandra Tune, At Large**

Deloitte

**Sheila Drew, At Large**

Creative Financial Staffing of Colorado

**Vanda Dyson, At Large**

DYCO Diversified

**Lisa Austin, Advisory**

The Service Factor Training Co

**Dana Lynch, Advisory**

Elements of Image

**Pam Fischer, Advisory**

Design a la Carte, Inc.

**Nora Kelly, Advisory**

Attorney

**Lauren Kaplan, Advisory**

Rodan + Field

**Kathryn Truax, Advisory**

Wells Fargo Advisors, LLC

**Brenda Mahoney, Advisory**

CAbi Consultant

**Jaimee Reed, Advisory**

Cairn Insurance Services Inc.

**EMERITUS BOARD MEMBERS****Emilie Ailts, Melinda Harper,  
and Charlene Wilson**

## From Our October Luncheon Sponsor – Kristi Sullivan

### Why be Average? Save for Your Best Retirement!

I am often asked, “How am I doing with my savings compared to others my age?” This is hard to answer because others your age have different work histories, incomes, inheritances and a dozen other unique factors. Also, if you look at average US household savings, the numbers are so dismal you will want to be well above average.



A better question is whether or not you are on track to support your own lifestyle in retirement. Forget about what your neighbors have saved –or most likely haven't. If you MUST compare yourselves to average, here are some numbers you can use:

Social Security for the average American was just under \$1,300/month in 2013 ([www.ssa.gov](http://www.ssa.gov)). The average household spent just over \$51,000 in 2013 (US Bureau of Labor Statistics). That means the average American without a pension will need to generate \$35,400/year from investments in retirement.

If you retire in your mid-60s, a reasonable percentage to start drawing from your savings is 4%. This assumes that from the original withdrawal in the first year of retirement, you will increase that number by 3%/year for inflation and that your investments will go up and down over time.

$\$35,400 / .04 = \$885,000$ . To get to \$885,000 by age 65, you will need the following monthly savings at a 7% rate of return:

- Starting at age 25: \$350/month
- Starting at age 35: \$730/month
- Starting at age 45: \$1,680/month
- Starting at age 55: \$5,000/month

Lesson learned? Saving early is saving easy! If you treat savings as urgently as you do rent/utilities/groceries from an early age, you will be able to support your lifestyle in retirement.

**Kristi Sullivan** | Sullivan Financial Planning, LLC  
303-324-0014  
[kristi@sullivanfinancialplanning.com](mailto:kristi@sullivanfinancialplanning.com)

## Renew Your Membership Today- In Order to Continue to Receive Member Benefits

**CLICK HERE** to **renew your Alliance membership today** by credit card through Blacktie. You can select from three individual membership choices, plus a student membership choice.

If you would like to first review the membership options and benefits at each level, **CLICK HERE** to be taken to the APW website "Membership Levels" page, then come right back here and finish your renewal.

If you have questions, or if you joined The Alliance mid-year and are qualified for special pro-rated dues, email or call Kerry Hammond [execdir@apwcolorado.org](mailto:execdir@apwcolorado.org), 303-368-4747 for more information.

If you prefer to pay by check, please click the renewal link, shown above under the credit card payment option and print out the renewal application, fill in your information and mail it together with your check payable to: The Alliance of Professional Women, P.O. Box 480384, Denver, CO 80248. Thank You!

## Public Affairs Meetings

The **Public Affairs Committee is back from the summer break**; relaxed, refreshed, and ready to offer new and exciting programs.

The first meeting of the new membership year will be on **September 8, 2015**, at **Zaidy's Restaurant** in Cherry Creek, First Avenue and Adams Street, Denver. The meeting starts at 7:00 am, for networking, and our speaker will present at 7:30 am. We buy our own breakfast. Note that **this is the second Tuesday of the month**. RSVP Nora Kelly [nvkesq@gmail.com](mailto:nvkesq@gmail.com)

Our speaker is **KAREN MIDDLETON**, the Executive Director of NARAL Pro-Choice Colorado. Karen will speak to us about "pregnancy crisis centers," which are not really established to aid pregnant women in need but instead operate to provide anti-abortion propaganda. Karen will also provide an update on current reproductive rights issues in Colorado.

Karen has served on the Colorado State Board of Education and as a Colorado state legislator. In 2013, she became the Executive Director of NARAL Pro-Choice Colorado, a political organization which works on behalf of reproductive rights for the women of Colorado. She will bring materials to share and we will have plenty of time for questions for her.

We hope you can **join us on September 8** for discussion of this important topic!



**Join APW members or prospective APW members at upcoming Coffee Connections.**

When: Friday, **September 18**, 8:30 to 10:00 am  
Where: **Trompeau Bakery**, 2950 S. Broadway (2 blocks south of Yale)  
RSVP: **LEIGH MILLER** [millerleigh13@gmail.com](mailto:millerleigh13@gmail.com) or 720-635-9991 to allow us to save you a seat.

When: Friday, **October 16**, 8:30 am to 10:00 am  
Where: **Woody Creek Bakery**, 5073 S. Syracuse Street, Denver, 80237  
RSVP: **LAUREN KAPLAN** [lauren@thekaplans.com](mailto:lauren@thekaplans.com), or 303-912-2576 to let us know you are coming.

**Wish you had more time with APW members? Join Coffee Connections!** Grab a cup of coffee, tea or breakfast and join other APW members and prospective members to share information about your business and discuss business-related topics. Leave when you need to, our end time is approximate.

[\[Back to What's Inside\]](#)



**Luncheon Sponsors**

Kristi Sullivan  
Sullivan Financial Planning  
October 2015

---

Cari Nelson and Megan Henson  
Etcetera  
August 2015

---

Pamela Wilson  
The Care Navigator  
July 2015

---

Alliance Foundation  
June 2015

---

Jayne Sanders  
Precision Wisdom™  
April 2015

---

Betsy Wiersma  
CampExperience  
Corporate Members  
March 2015

---

Anne Angerman  
Jill Klancke  
February 2015

---

Pamela Wilson  
The Care Navigator  
Oct 2014

---

Abbe Pensack  
Genworth Financial  
Nov 2014

Interested in becoming a Networking  
Luncheon Sponsor? Call 303-368-4747

**Corporate Members**

**KUAN YIN MEMBER**  
Bauerle and Company, P.C.  
Harper Hofer & Associates, LLC

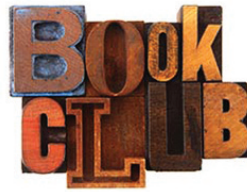
**CERRID MEMBERS**  
FirstBank  
Alexander Smith Design  
CampExperience™  
Coordinated Financial Services, Inc  
CU Advanced Reproductive Medicine  
Eide Bailly  
Lutz Zuber & Associates  
Moye White LLP  
REALART  
Ryan, Gunsauls & O'Donnell, P.C.  
The Advocates  
White and Steele, P.C.

**Sustaining Alliance Member**

Jill Klancky  
Anne Moore

Be advised that the Communiqué is not private, only the  
APW Member Directory is restricted to members only,  
and can be viewed on the Internet.

The Alliance is a member of and proudly  
supports: Colorado Women's Lobby, and The  
International Alliance for Women

**QUARTERLY  
BUSINESS****A Members-Only Event**

There is still time to read our current pick, *Now Discover Your Strengths*, and join the APW Business Book Club on **October 20**, 5:30 – 7:30 pm. We will meet at a private home located at 16 Arabian Place Littleton CO 80123.

Book: *Now Discover Your Strengths* by **MARCUS BUCKINGHAM**

**Book Description:** Unfortunately, most of us have little sense of our talents and strengths, much less the ability to build our lives around them. Instead, guided by our parents, by our teachers, by our managers, and by psychology's fascination with pathology, we become experts in our weaknesses and spend our lives trying to repair these flaws, while our strengths lie dormant and neglected. Join us as we discuss the book!

**Please note:** You must purchase the book or ebook. With each purchase the buyer gets a code that can be used online to allow you to take the assessment that is included with this book. Each reader will determine their top strengths, and the book goes into detail about each, and is used as a reference to guide you. If you purchase the book electronically, the publisher will include a copy of the most recent strength study: *Clifton StrengthsFinder 2.0*.

I think this is going to be a great discussion. Come with a snack or your favorite wine to share.  
**RSVP to KERRY HAMMOND at [execdir@apwcolorado.org](mailto:execdir@apwcolorado.org).**

**APW Panties & PJs Happy Hour**  
was a Great Success

On **August 6**, **Moye White, LLP** generously provided their outdoor patio for a **Happy Hour to benefit Excelsior Youth Center**. The price of admittance was a donation of new panties or pajamas. Drinks and appetizers were served, and several wonderful lingerie items were sold in a silent auction.

The event was organized by the **APW Outreach Committee** who did a great job of raising much needed clothing for the Center. 282 pieces were donated, with an estimated value of over \$1400. That's pretty impressive.



**Communiqué** Committee

Kerry Hammond, Editor  
Sandy Smith, Co-Chair  
Andra Blaniar  
Alexandra Cook  
Kelly James  
Andi McCarty

**Communiqué** Sponsors

Sandy Smith/Alexander Smith Design  
[www.alexandersmithdesign.net](http://www.alexandersmithdesign.net)

**Editor** Notes**From The Editor**

The deadline for submitting articles for the COMMUNIQUÉ is Noon on the 15th of each month. All submissions must be **electronic**. The COMMUNIQUÉ provides stories of interest & information to Alliance members. Please send **ideas, comments, contributions, and questions** to **Kerry Hammond** at [execdtr@apwcolorado.org](mailto:execdtr@apwcolorado.org)

## COLORADO EVENTS This Fall!

**Oktoberfest Denver:**  
**Sept. 18–20 and 25–27, 2015**  
Larimer Square

Ok oberfes s around he world are largely about beer but down own Denver s autumn celebra ion urns out fun for he whole family with a daschund derby ha has o be seen o be believed cos ume con es s food boo hs polka dancing and live music

**Elk Fest: Oct. 3–4, 2015**  
Estes Park hosts the 17th Annual Elk Fest in Bond Park and the surrounding area.

The beautifully haunting bugle of a bull elk is unmistakable, and every October spectators head to Estes Park to experience the phenomenon.

## Networking Luncheon Sponsor – Sign Up Now!

**Showcase your business!** The Alliance offers the opportunity for members to sponsor networking lunches.

**A Networking Luncheon Sponsor receives the following benefits:**

- A five-to-ten minute promotional presentation at the sponsored APW lunch meeting. Fee includes lunch for the sponsor and a guest. Sponsor will be asked to provide a small gift for a drawing during lunch (i.e. complimentary one hour consultation, gift certificate to a restaurant, etc).
- Newsletter sponsorship, which includes a full-page article in the newsletter as well as a full-color business card size ad and link to the article and sponsor website in the newsletter e-mail. This full-color, formatted newsletter e-mail is distributed to over 1,500 professional women in Denver!
- Exclusive distribution/display of materials at place settings or on chairs at luncheon.
- Business cards or electronic spreadsheet of all luncheon attendees collected and sent to you after luncheon.
- Recognition as a sponsor at each of the monthly luncheons.
- Active link to your company website on the front page of [APWcolorado.org](http://APWcolorado.org). This 12-month listing will boost your own website's search engine ratings because APW consistently returns top level results in search queries.
- Highlighted as a sponsor in the Communiqué every other month with a feature article on the sponsor during the month of your sponsorship.
- Spotlight piece on you as a sponsor, a month after your sponsorship, in the Communiqué

The cost of a Network Luncheon Sponsorship is \$300. Sole Proprietors may split the cost and benefits of hosting a network luncheon. Our member feedback has been that it takes approximately three weeks to one month to recoup the cost of business gained through exposure at the luncheon and in our newsletter.

Networking Luncheons will be reserved on a first-come-first-serve basis, so reserve your month today by contacting **KERRY HAMMOND** at (303) 368-4747 or

## JUST TIPS: Tips on Microsoft & More

For more TIPS  
AND MUCH MORE..visit  
[www.mcstech.net](http://www.mcstech.net)

## JUST TIPS: Complete Computer and Professional Development Training

**Email your calendar when trying to set an appointment**

Scheduling an appointment with someone outside of your organization can be a hassle. Finding time that works for both parties is like playing battleship. **Read more at [www.mcstech](http://www.mcstech)**

**Send a follow up email after a meeting**

After an Outlook meeting, you may want to send a follow up email to all of the attendees.

**Read more at [www.mcstech](http://www.mcstech)**

Computer Training • Professional Development • Online Learning • Private Training

## Member News &amp; Information

## Alliance Networking Opportunities

**WHAT: OUTREACH COMMITTEE MEETING**

When: Wednesday, **September 2**, and **October 7**, 5:30 pm  
 Where: Home of **PAM FISCHER**, 2218 Franklin Street,  
 Denver, 80205  
 RSVP: **JAMIE REED** [inbox@cairninsurance.com](mailto:inbox@cairninsurance.com) or  
 855-652-2476

**WHAT: PUBLIC AFFAIRS COMMITTEE MEETING**

When: Tuesday, **September 8**, 7:00 am Networking,  
 7:30 am, Speaker  
 Where: **Zaidy's** in Cherry Creek, 1st & Adams  
 RSVP: **NORA KELLY** [nvkesq@gmail.com](mailto:nvkesq@gmail.com)  
 Topic: "Pregnancy Crisis Centers" and Reproductive Rights  
 Issues in Colorado

**WHAT: HELPING WOMEN+ CHANGING LIVES ANNUAL LUNCHEON**

When: Thursday, **September 10**, registration 11:15;  
 program 11:30 am – 1:00 pm  
 Where: **PPA Event Center**, 2105 Decatur Street,  
 Denver, 80211  
 Cost: FREE  
 RSVP: [alliancefoundation1@gmail.com](mailto:alliancefoundation1@gmail.com) to attend if you  
 have not registered through a Table Captain

**WHAT: COFFEE CONNECTIONS—CENTRAL DENVER**

When: Friday, **September 18**, 8:30 – 10:00 am  
 Where: **Trompeau Bakery**, 2950 S. Broadway  
 (2 blocks south of Yale)  
 RSVP: **LEIGH MILLER** [millerleigh13@gmail.com](mailto:millerleigh13@gmail.com) or  
 720-635-9991

**WHAT: NETWORKING EVENTS COMMITTEE MEETING**

When: Tuesday, **October 6**, 11:30 am – 1:00 pm  
 Where: **Natural Grocers**, Colorado Blvd and Evans  
 RSVP: **LYNNE AMERSON** [lynne.amerson@myfw.com](mailto:lynne.amerson@myfw.com), or call  
 303-368-4747

**WHAT: OCTOBER NETWORKING LUNCHEON**

When: Thursday, **October 8**, 11:30 am – 1:00 pm  
 Where: **Comedy Works South**, Curtis Ballroom,  
 5345 Landmark Place, Greenwood Village, 80111  
 RSVP: **CLICK HERE** to register  
 Sponsor: **KRISTI SULLIVAN, Sullivan Financial Planning, LLC**

**WHAT: COFFEE CONNECTIONS--SOUTH**

When: Friday, **October 16**, 8:30 – 10:00 am  
 Where: **Woody Creek Bakery**, 5073 S. Syracuse Street,  
 Denver, 80237  
 RSVP: **LAUREN KAPLAN** [lauren@thekaplans.com](mailto:lauren@thekaplans.com) or  
 303-912-2576

**WHAT: QUARTERLY BUSINESS BOOK CLUB**

When: Tuesday, **October 20**, 5:30 pm  
 Where: **16 Arabian Place**, Littleton CO 80123  
 RSVP: **KERRY HAMMOND** [apwcolo@yahoo.com](mailto:apwcolo@yahoo.com) or  
 303-368-4747

Book: *Now Discover Your Strengths* by  
**MARCUS BUCKINGHAM**

Join us as we discuss our next book – *Now Discover Your Strengths*: most of us have little sense of our talents and strengths, much less the ability to build our lives around them. Instead, guided by our parents, by our teachers, by our managers, and by psychology's fascination with pathology, we become experts in our weaknesses and spend our lives trying to repair these flaws, while our strengths lie dormant and neglected.

**WHAT: MEMBER SUPPORT COMMITTEE MEETING**

When: Wednesday, **October 21**, 11:00 am  
 Where: **Woody Creek Bakery, DTC**  
 RSVP: **LEAH DIRKS** [leah.dirks@efirstbank.com](mailto:leah.dirks@efirstbank.com)

## Other Networking Opportunities

**WHAT: CAMPEXPERIENCE™ 10TH ANNIVERSARY**

When: **September 18-20**  
 Where: **Cheyenne Mt Resort** in Colorado Springs

This is happening very soon—hurry, registration is still open but there are only about 10 spots left. CampExperience is offering an APW special last minute deal to sell out the 10th Anniversary special year: Registration is only \$800

You will find complete camp details and registration for 2015 camp, plus any Pre-Camp events at [www.CampExperience.com](http://www.CampExperience.com).



## Member News &amp; Information

## New Members

**MAURA RIDGE**—Senior Philanthropic Planner, **The Denver Foundation**, 303-996-7322, [mr ridge@denverfoundation.org](mailto:mr ridge@denverfoundation.org)

## Anniversaries

The Alliance wishes to recognize and thank the following women who joined The Alliance of Professional Women in September or October. We greatly appreciate your continued support of our organization.

24 years

**SANDY SMITH** . . . . . **Alexander Smith Design**

8 years

**LAURA SRSICH** . . . . . **Eide Bailly, LLP**

6 years

**NORA KELLY**

5 years

**ANNE MOORE** . . . . . **The Avatar Course**

3 years

**VONDA DYSON** . . . . . **DYCO Diversified**

**SHARI LUTZ** . . . . . **Lutz Zuber & Associates, LLC**

1 year

**RACHEL JENNINGS** . . . . . **White and Steele, P.C.**

**GRETCHEN MOORE** . . . . . **Harper Hofer & Associates, LLC**

**JENNA KLOS** . . . . . **Harper Hofer & Associates LLC**

**STEPHANIE JOHNSON** . . . . . **Eat & Think Healthy, LLC**

## Member News

**Harper Hofer & Associates, LLC** is pleased to announce that **PEGGY STRICKLIN, CPA/CFF**, has joined the firm as an associate. Peggy specializes in the taxation of families, their closely-held businesses, estates, trusts and charitable entities used to pass wealth to heirs and charities. She has the experience with these entities to also provide forensic services to these clients. In addition, her clientele includes U. S. citizens living abroad facing complex tax compliance issues. **Congratulations** to Harper Hofer & Associates for their new addition.

**ABBE PENSACK** is proud to announce the opening of **Abbe Pensack Insurance Ltd.**, specializing in long term care planning through various insurance options. Through this new independent venture, she will continue to build on her experience helping people protect their assets and their safety for the times when they are the most vulnerable. There are new and flexible ways to fund long term care with favorable tax status and multi-pay solutions. **Congratulations** to Abbe on her new and exciting venture.

## Alliance Thanks!

### July Networking Luncheon

We had an elegant and intimate luncheon at the **Cherry Creek Country Club** in July. The weather was beautiful and the food was excellent. Our Luncheon Sponsor was **PAMELA WILSON**, President of The Care Navigator, [www.thecarenavigator.com](http://www.thecarenavigator.com), who talked about the balance between caring for our loved ones while maintaining boundaries. She discussed her latest book: *The Caregiving Trap: Solutions for Life's Unexpected Changes®*. Pamela supplied several copies of her book as door prizes.

Our luncheon hosts were **KRYSTA GERSTNER**, [www.efirstbank.com](http://www.efirstbank.com) and **MICHELLE KU** [www.AddisonInteriorDesignDenver.com](http://www.AddisonInteriorDesignDenver.com) who did a great job hosting the event.

### August Networking Luncheon

We had a sold out event in a new venue in August at **TAG Restaurant** on Larimer. We thank our Luncheon Co-Sponsors, **CARI HARRIS** and **MEGAN HENSON** from **Etcetera**. The ladies discussed their Etcetera clothing line, where they offer services as Wardrobe Consultants and an extensive of line of clothing for all occasions. They also gave us a fashion show of some of their offered designs. Thank you to our hosts **PAM FOLEY** of **Lawford Solutions** [www.lawfordsolutions.com](http://www.lawfordsolutions.com) and **DEBORAH O'NEIL** of **Assured Equity Management Corporation** [www.assured-equity.com](http://www.assured-equity.com) for making this such a fun event.

We also thank our door prize donors, **CARI HARRIS** and **MEGAN HENSON** for the beautiful scarf, which came with a \$25 Gift Card to Etcetera, and a second door prize of a \$50 Gift Card to **Etcetera**. Both Gift Cards can be used to shop the next quarterly clothing collection Sept. 30-Oct. 12. **LESLIE GARSKE** was also kind enough to donate two tickets to Westside Story. Great food, fun and prizes!

## New Member Referrals

Sending out huge thanks to our members for all the great referrals to The Alliance of Professional Women!

Thank you to the following Alliance member who has referred a brand new Alliance member since our last Communiqué. We are grateful to **CAROL MILLER** for referring **MAURA RIDGE**. We appreciate you sharing our fabulous organization and are pleased to run your business card ad as a small token of our appreciation in an upcoming newsletter. Receive a free ad for referring new members to the Alliance! In an organization like The Alliance, we depend on referrals to increase our membership. As a small thank you for referring a new member to The Alliance, you will receive a complimentary business card ad in the Communiqué.

[\[Back to What's Inside\]](#)

# Business Sources



**Kristi Sullivan**  
Certified Financial Planner™  
(720) 524 - 6848

kristi@sullivanfinancialplanning.com  
www.SullivanFinancialPlanning.com

783 South Downing Street  
Denver, CO 80209

Planning for  
**Peace  
of Mind**



**Trusts & Estates Attorneys**

- Estate Planning & Probate
- Protecting Against Financial Fraud
- Planned Giving

**Moye|White** LLP Attorneys at Law

contact Lorni Sharrow  
6 Market Square 6th Floor 400 6th Street  
Denver CO 80202 486  
tel 303.292.2900 fax 303.292.45 0  
www.moyewhite.com

CONNECTING BUYERS AND SELLERS WITH EASE

**Kristina Davis**  
BROKER ASSOCIATE  
303.870.8142  
www.DreamsByDavis.com

**INNOVATIVE**  
Real Estate Group LLC



**Amy Lane**  
Owner

T 303 957 3100  
M 303 332 5673  
E alane@homecareassistance.com

**CENTENNIAL**

Serving the communities of  
Southeast Suburban Denver

8200 S. Quebec Street, Suite A 5  
Centennial, Colorado 80112

[www.CentennialHCA.com](http://www.CentennialHCA.com)

**Park Hill Bookkeeping Services**  
Your Partner in Business

**Michelle Roll**  
Small Business Specialist

mroll@parkhillbookkeeping.com  
www.parkhillbookkeeping.com

cell 303-668-0343  
fax 303-321-3227

**CampExperience**

Amazing Women Luxury Retreats  
Camp Experience....Designed for You!

[www.CampExperience.com](http://www.CampExperience.com)

**Leah Dirks**  
Senior Vice President - Littleton

**FirstBank**  
101 West County Line Road  
Littleton, Colorado 80129

T 303 347 5901 F 303 347 5927  
leah.dirks@efirstbank.com  
efirstbank.com NMLS ID #: 566178



Ryan, Gunsauls & O'Donnell, P.C.  
Certified Public Accountants

**Elizabeth B. Moore, CPA, MTX**  
**Uyen T. Pavelis, CPA**  
**Katherine T. Moeller, CPA**

5590 East Yale Avenue  
Suite 201  
Denver, Colorado 80222

Tel 303.758.5558  
Fax 303.756.1741

[www.rgo.cpa.com](http://www.rgo.cpa.com)

# Business Sources

THE ALLIANCE OF PROFESSIONAL WOMEN'S COMMUNIQUE



CERTIFIED PUBLIC ACCOUNTANTS

Ann Broderick, CPA  
Angelia McGill  
Andra Blanariu  
Gina Miller  
Kimberly Shephard

7887 E. Belleview Ave., Suite 700  
Denver, Colorado 80111

MAIN: 303.759.0089

FAX: 303.759.2189

WWW.BCDENVER.COM



TARGETED LEGAL RESOURCES

Katrina Sellers  
Shelby Kealy  
Liz Daugherty

1800 Glenarm Pl.  
14th Floor  
Denver, CO 80202

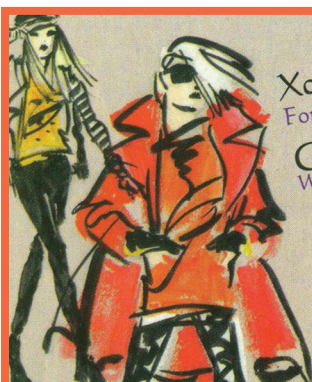
T: (303) 825-2600

F: (303) 551-8080



myadvocate  
@targetedlegal.com

BETTER LEGAL TALENT THROUGH BETTER UNDERSTANDING



Xcessorize, LLC  
For the Fashion Savvy Woman!  
Cari Harris  
Women's Designer Fashion Sales/Owner  
2751 Lafayette St.  
Denver, CO 80205  
(303) 964-0774  
(303) 332-2047 cell  
timirac4@gmail.com  
www.etcetera.com



WWW.PBSPAY.COM

Anna Kathryn Gresham  
Vice President of Business Development

PO Box 200831 • Denver, CO 80220  
Direct/Fax 720-644-6233  
Mobile 205-541-6447 • agresham@pbspay.com



litigation support + business valuation  
+ consulting

633 17TH STREET SUITE 1640  
DENVER, CO 80202  
303.407.8016 MAIN

IT ALL ADDS UP TO US.

www.lzacpa.com



The Care Navigator

Embracing life's transitions  
with dignity, clarity and stability.®



Pamela D. Wilson, CSA, MS, BS/BA, CG  
President

Mail to: P.O. Box 18349, Golden, CO 80402

Office: 355 South Teller Street #200  
Lakewood, CO 80226

pamela@thecarenavigator.com  
www.thecarenavigator.com

c: 303-810-1816

p: 303-205-7877

f: 866-553-9386





# BUSINESS SOURCES

THE ALLIANCE OF PROFESSIONAL WOMEN'S COMMUNIQUE



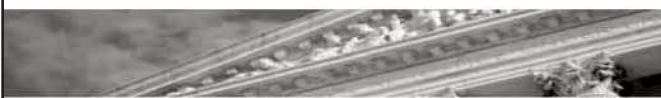
720.841.0779

**SHERI CHAMNESS**

5390 Mohawk Road  
Littleton, CO 80123  
www.Planet-Realart.com  
www.CozySeeds.com

sheri@planet-realart.com

**WHITE AND STEELE, P.C.**



*More Than Five Decades of Trial Proven Strength*

600 17th Street, Ste 600N      221 East 21<sup>st</sup> Street  
Denver, Colorado 80202      Cheyenne, Wyoming 82001  
(303) 296-2828      (800) 333-7173

www.whiteandsteele.com



**Leslie S. Garske**  
Financial Professional  
Leslie.Garske@axa-advisors.com  
Tel: (303) 892-5700  
Cell: (720) 635-2686

**AXA Advisors, LLC**  
8742 Lucent Blvd, Suite 600  
Highlands Ranch, CO 80129



**AXA ADVISORS**  
redefining / standards®



**Samantha Dardano Kirschke**  
Real Estate Broker  
Dardano Properties, LLC



**303.331.6700**  
303.523.0833 cell  
303.393.8888 fax  
sdardano@dardanorealty.com  
www.dardanoproperties.com  
7489 East 29th Place, Denver, CO 80239



**SNODGRASS LAW, LLC**  
Specializing in Family Law & Civil Litigation

**Kelly L. Snodgrass, Attorney**  
217 E. 7th Ave. Denver, CO 80203  
(303) 536-6393  
Kelly@SnodgrassLawLLC.com



*An Affiliate of The GHP Financial Group*

**Sheila Z. Drew**  
Branch Manager

1670 Broadway, Suite 3000  
Denver, CO 80202  
t. 303.831.5006 f. 303.831.5032  
e. sheilad@cfs-co.com  
www.cfstaffing.com



**EideBailly**  
CPAs & BUSINESS ADVISORS

**Laura Srsich, CPA**  
Tax Partner  
T 303.459.6740  
M 303.980.5029  
lsrsich@eidebailly.com

440 Indiana St., Ste. 200  
Golden, CO 80401-5021

# Business Sources

THE ALLIANCE OF PROFESSIONAL WOMEN'S COMMUNIQUE



We explore, visualize and  
create design solutions  
that drive results.

Creative partnerships produce results.

[www.alexandersmithdesign.net](http://www.alexandersmithdesign.net) • [303] 759-0401

branding print media advertising web design packaging



**IN HOME<sup>®</sup>**  
and Family  
Services, Inc.

**Pamela Dombrowski-Wilson**  
President

Phone: 303-526-2318  
Fax: 303-279-3533

1117 1/2 Washington Avenue  
Golden, CO 80401

## alzheimer's association

In her 60s, a woman's estimated  
lifetime risk for developing

**Alzheimer's**  
1 in 6



**Breast Cancer**  
1 in 11



## Strategic focus HAS NOTHING TO DO WITH ONE'S eyesight.

WHERE LITIGATION AND VALUATION INTERSECT WITH  
FORMIDABLE EXPERTISE, YOU'LL FIND THE PROFESSIONALS  
OF HARPER HOFER & ASSOCIATES.

WHEN THE STAKES ARE HIGH, OUR ANALYSIS IS ON POINT,  
DELIVERING STRATEGIC, FOCUSED, MEASURABLE RESULTS.

NEED TO GET TO THE HEART OF A COMPLEX MATTER?

WE TELL THE STORY OF THE MONEY, IN FOCUS.

THERE'S STRENGTH IN NUMBERS.

**harperHofer**

& ASSOCIATES, LLC

MEMBER OF FINANCIAL CONSULTING GROUP, L.C.

FINANCIAL CONSULTANTS IN VALUATION, LITIGATION AND MARITAL DISSOLUTIONS

303.486.0000 [www.MONEYTALKSWETRANSLATE.COM](http://www.MONEYTALKSWETRANSLATE.COM)





# calendar of events

See **PAGE 8** for event information.

SEPTEMBER 2015

S	M	T	W	T	F	S
		1	2 <b>Outreach Committee Meeting</b> 5:30 pm. Home of PAM FISCHER, 2218 Franklin Street, Denver 80205 JAMIE REED 855-652-2476 inbox@cairninsurance.com	3	4	5
6	7 <b>LABOR DAY</b>	8 <b>Public Affairs Committee Meeting</b> 7:00 am with speaker Zaidy's of Cherry Creek NORA KELLY 303-514-3143 nvkesq@gmail.com	9	10 <b>Helping Women + Changing Lives Luncheon</b> 11:15 am - 1:00 pm, PPA Event Center alliancefoundation1@gmail.com	11	12
13	14	15	16	17	18 <b>Coffee Connections</b> 8:30 - 10:00 am, Trompeau Bakery LEIGH MILLER millerleigh13@gmail.com <b>CampExperience</b> Sept 18-20 www.CampExperience.com	19
20	21	22	23	24	25	26
27	28	29	30			

For more event information see **PAGE 8** or visit [www.apwcolorado.org](http://www.apwcolorado.org)

OCTOBER 2015

S	M	T	W	T	F	S
				1	2	3
4	5	6 <b>Networking Events Committee Meeting</b> 11:30 am - 1:00 pm, Natural Grocers, Colorado Blvd and Evans, LYNNE AMERSON lynne.amerson@myfw.com	7 <b>Outreach Committee Meeting</b> 5:30 pm. Home of PAM FISCHER, 2218 Franklin Street, Denver 80205 JAMIE REED 855-652-2476 inbox@cairninsurance.com	8 <b>Networking Luncheon</b> 11:30 am - 1:00 pm, Comedy Works South <a href="#">CLICK HERE</a> to register	9	10
11	12 <b>COLUMBUS DAY</b>	13	14	15	16 <b>Coffee Connections</b> 8:30 - 10:00 am, Woody Creek Bakery LAUREN KAPLAN lauren@thekaplans.com	17
18	19	20 <b>Quarterly Book Club</b> 816 Arabian Place, Littleton Kerry Hammond apwcolo@yahoo.com	21 <b>Member Support Committee Meeting</b> 11:00 am, Woody Creek Bakery, DTC LEAH DIRKS leah.dirks@efirstbank.com	22	23	24
25	26	27	28	29	30	31 <b>HALLOWEeeeeen!</b>