



COMMUNIQUE

What's Inside

From Our Executive Director	1
Day Hikes	1
Member Appreciation Networking Luncheon. 2-3	
Member Appreciation Luncheon Bag Sponsor	3
From Our May Luncheon Speaker, Tami Gulland	4
June Networking Luncheon	5
SAVE THE DATE 6th Annual Helping Women + Changing Lives Luncheon	5
Our Helping Women + Changing Lives Sponsors	5
Tips for Generating Business, from APW Member Jayne Sanders	6
Public Affairs Meetings	7
Let's Hear From An APW Board Member	7-8
SAVE THE DATE TOPGOLF	9
NEWS AND INFORMATION:	
Alliance Networking Events, Member News and Information	9-13
Business Source	14-18
Calendar	19



KERRY HAMMOND

THE ALLIANCE OF PROFESSIONAL WOMEN

Executive Director

Kerry Hammond 303-368-4747
E-Mail: execdir@apwcolorado.org
Website: www.apwcolorado.org
P.O. Box 480384, Denver CO 80248

Connecting Women Personally, Professionally and Philanthropically

From Our Executive Director

This issue of the Communique is **full of useful information, interesting articles, and upcoming events**. We always **welcome your feedback**, so feel free to send an email to execdir@apwcolorado.org with any questions or comments. If there are things you'd like to see included in our newsletter, please let us know that too.

Just a reminder to take a few minutes to update your APW online profile. All you need to do is log in to your account (you can reset your password if you can't remember it) and make sure your information is complete. Members can't refer business to you if they don't know what you do. The website is one of our most valuable tools for referrals, so please take advantage of it.

And speaking of websites, we are in the process of improving our Alliance of Professional Women and Alliance Foundation websites to make them more Mobile and Tablet friendly. The project is nearly complete, and our website designer, **SHERE CHAMNESS** of **REALART**, is working hard to finish the new look. An announcement will be made when it's up and running.

We are also excited to be launching a Linked In initiative, so stay tuned for information in an upcoming newsletter or What's Happening email. We will let you know how to beef up your own Linked In profiles and how to link to the Alliance of Professional Women and other businesses to increase your exposure.

Lastly, we've been very active on Facebook and have been showcasing our luncheons and other activities. We've added an APW Member Highlight. Every other Wednesday, I draw names from a hat and the lucky winners are able to submit a blurb about their business and a photo of themselves. These have gotten the highest number of views of any of our Facebook posts because members share these posts and link them to their personal pages. What great exposure! If your name is drawn, you will get an email from me, so watch your inbox.

Make sure to check out the latest Facebook posts and "like" us.

KERRY HAMMOND
Executive Director

Day Hikes

Enjoying a hike – Here are two for you to check out.

Alderfer/Three Sisters Park. Just far enough away from Denver to feel like an escape from the city, Alderfer/Three Sisters Park is part of the Jefferson County Open Space Program and provides beautiful views of the rock formations known as the Three Sisters and The Brother overlooking Bear Creek Basin.

Herman Gulch. Located just off I-70, Herman Gulch is a popular day hiking destination. After hiking past the parking lot at the trail head and getting away from the Ski Way, hikers can enjoy a pristine nature experience complete with a running stream. The complete trail only takes a few hours to complete but hikers looking for a more challenging hike can continue toward the Continental Divide at Jones Pass.

If you have a favorite hike - **please share with us** - send to sandy@alexandersmithdesign.net.

Communiqué Committee

Kerry Hammond, Editor
Chelsey Burns, Co-Editor
Sandy Smith, Co-Chair

Communiqué Sponsors

Sandy Smith/Alexander Smith Design
www.alexandersmithdesign.net



Join us for our 11th Annual Member Appreciation Networking Luncheon. You may also know this luncheon by its other name, the “SWAG Bag Luncheon.”

Plan to join the APW for **one of our favorite events** of the year on **Thursday, May 11**. We will start a bit early to enjoy a full two-hour event, so block your schedule from 11:00 am to 1:00 pm. The program will begin promptly at 11:30 am, so please arrive on time. We are pleased to be returning to the **Denver ChopHouse & Brewery** for this special event.

The Denver ChopHouse 1735 19th Street, Denver CO 80202
(on the corner of 19th and Wynkoop, next to Coors Field)
Valet parking is available at the restaurant.



Our **special two-hour celebration** is for **APW members and guests, all are welcome**. Attendees will receive a gift from the APW plus a bag filled with gifts from our bag sponsors for this event. Don't miss it!



We are delighted to welcome **TAMI GULLAND**, our speaker for this event. Tami is not your typical business coach. She works with intuitive, service-based, women business owners. Tami doesn't work alone. She taps into her client's spiritual team and helps her clients do so as well. This helps her clients get into alignment with their message, marketing, energy, mindset, and money—because it is different for everyone.

Once you are in alignment, everything else falls into place: sales conversations, opportunities, and profits—it all expands. Alignment first is the key to sustainable business success.

Tami has written *Conversations with Angels: Divine Inspirations to Uplift Your Heart* and she co-authored *Pearls of Wisdom: 30 Inspirational Ideas to Live Your Best Life Now* with **JACK CANFIELD**. She lives on a ranch in the foothills of the Rocky Mountains.

Our Menu:

Appetizer: Freshly Baked Corn Bread and Honey Butter

Entree Choices:

TOP SIRLOIN (Medium)
Grilled and served with
Cabernet Mushrooms **OR**

CHICKEN PICATTA
Breaded chicken breast sautéed
with lemon, butter, capers,
and white wine **OR**

RICOTTA & MOZZARELLA
STUFFED SPINACH RAVIOLI
Tossed in Diavlo Cream sauce
with green beans and
cherry tomatoes

Dessert: Mini Cupcakes

Member Appreciation Networking Luncheon

Continued from Page 2

Cost: \$35 for members; \$45 for non-members.

Deadline for pre-registration is 5:00 pm on Friday, **May 5**. There is a \$5 late fee thereafter, until the event is full. Absolutely no walk-ins.

If you believe you signed up online but did not receive a receipt, **contact KERRY HAMMOND** to verify that you are registered, execdir@apwcolorado.org or 303-368-4747.

**CLICK HERE
to REGISTER NOW**

Member Appreciation Luncheon Bag Sponsor

If you've signed up to be a **SWAG Bag Sponsor**, you still have a few days to drop off your items. **Deadline for drop-off** is Friday, **May 5** by 5:00 pm.

Drop off location:

The Home of **GINNY TAYLOR**

2980 S. Dexter Way, Denver, CO 80222

Call Ginny to Schedule: 720-333-6934

We would like to **thank our current SWAG Bag Sponsors**.

OUR BAG SPONSOR: Home Care Assistance of Centennial

OUR SWAG SPONSORS:

REALART

Samantha Dardano, Metro Brokers Inc.

FirstBank

Leslie Garske, Divorce Resource Center of Colorado

FIT36 Lowry

E2 Business Gifts

Kerr Forensic Accounting, PC

Klancke & Cook, Attorneys at Law

Ku Interior Design

IMSEvents

Park Hill Bookkeeping Services

LIV Sotheby's International Realty

Moye White LLP

3i Law

A Better View Decor

Discover You

Hulse Law Firm, PC

The Juice Plus+ Company

GCG Financial, Inc.

Colorado Surrogacy, LLC

Design Health

Rosalie Chamberlain Consulting & Coaching

Coldwell Banker

doTERRA

Leadership

EXECUTIVE COMMITTEE

Sheila Drew, President
Creative Financial Staffing of Colorado

Leslie Garske,
Immediate Past President
AXA Advisors

Tracie Romero, Secretary
Design Health Concierge

Leah Dirks, Treasurer
FirstBank

Chelsey Burns, At Large
Mindful Health Coaching, LLC

Vanda Dyson, At Large
DYCO Diversified

Pam Fischer, At Large
Design a la Carte, Inc

Cari Harris, At Large
Etcetera

Dana Lynch, At Large
Elements of Image

Melissa Richards, At Large
LIV Sotheby's International Realty

BOARD MEMBERS

Sheila Drew, President
Creative Financial Staffing of Colorado

Leslie Garske,
Immediate Past President
AXA Advisors

Tracie Romero, Secretary
Design Health Concierge

Leah Dirks, Treasurer
FirstBank

Lynne Amerson, At Large
Chasefield Capital

Chelsey Burns, At Large
Mindful Health Coaching, LLC

Vanda Dyson, At Large
DYCO Diversified

Pam Fischer, At Large
Design a la Carte, Inc

Pamela Foley, At Large
REnew and REdo Holistic Décor

Kelle Graham, At Large
Rocky Mountain Jewelers

Cari Harris, At Large
Etcetera

Lauren Kaplan, At Large
Rodan + Fields

Leigh Miller, At Large
Juice Plus +

Lee Lipniskis, At Large
Core Contractors

Dana Lynch, At Large
Elements of Image

Melissa Richards, At Large
Liv Sotheby's International Realty

Julie Sequeira, At Large
J. Sequeira Agency

Kelly Snodgrass, At Large
Willoughby & Associates

Ginny Taylor, At Large
A Better View Décor

EMERITUS BOARD MEMBERS

Emilie Ailts, Melinda Harper,
and Charlene Wilson

From Our May Luncheon Speaker, Tami Gulland

If You Push Too Hard Life Will Push Back

I thought it would be easy. Boy, was I wrong!

When I started my business over thirteen years ago, I thought marketing was going to be easy for me. After all, I had a degree in journalism and marketing. I had years of corporate marketing experience and awards to 'prove' I knew how to market.

Imagine my surprise when I applied the marketing I knew to my coaching business and it didn't create the results I wanted.

I started to feel a lot of shame around marketing. So I pushed, forced, and made things happen in my business. I learned from many gurus and applied what they taught me. Sometimes I would get good results, sometimes mixed results. Often something just felt off inside of me. It was part of my learning curve as an entrepreneur. It felt awful.

Besides wanting to make my difference in the world, I also wanted to have the freedom and flexibility of owning a business. But instead of feeling freedom, I was consumed with my business. I was ignoring my family, which was (and is) a huge priority of mine.

I discovered I was sabotaging my success by working too hard and by not checking in with my truth. This took me a long time to figure out and cost me many thousands of dollars.

What I've learned being an entrepreneur is that the key to everything you want to create in your business, career, and life is to come back into alignment with the real you.

When you are in alignment, things click into place. Being yourself is what causes things to flow easily, allowing you to work less, feel inspired, and earn more. From this space, you attract more opportunities, abundance, and joy.

An essential step to becoming more congruent in your business is to learn an aligned way to market that feels good to you. Each person has a natural style of marketing and way that they influence people into new possibilities, whether they are potential clients, associates, partners, or children. I call this Graceful Marketing™. It is graceful, because not only is it natural to you, it is what attracts your ideal clients to you. It helps you leverage your time and energy. It is one of the key elements to create Soulful Profits™, an authentically aligned way of being in your business and life—following your unique path.

To help you get started, download your complimentary **Graceful Marketing™ Field Guide: How to Market in Your Own Truth.**

CLICK HERE
to DOWNLOAD NOW

In this guide, you will learn:

- How to identify your **Graceful Marketing™ Type**, which aligns you with your ideal customers
- Your personal persuasion power—how you naturally influence people to buy from you without manipulation

When you know these, it helps you find more freedom and ease in your marketing without pushing.

Tami Gulland is not your typical business coach. She helps her clients connect with their spiritual team to get into alignment so they can experience **Soulful Profits™** in their business. You can reach Tami at Tami@TamiGulland.com, 303.697.0289, or www.TamiGulland.com.

[Back to What's Inside]



June Networking Luncheon

Our **Networking Committee** is working hard to locate the perfect restaurant for our June luncheon. Stay tuned for the registration link and entrée choices.

Our **luncheon sponsor for the June event** is the **Alliance Foundation** and we will have an opportunity to hear more about the **HELPING WOMEN + CHANGING LIVES Annual Philanthropic Luncheon** that will take place on **September 14**. This year is our 6th year and it's going to be an exciting event.

The **money we raise** at our Philanthropic Luncheon **funds our Alliance Foundation programs: Scholarships, Local Outreach, and Village Banks**. We will hear more about these three great programs at the **June Networking Luncheon**.

Our Helping Women + Changing Lives Sponsors

We have some very **generous sponsors** who have joined in helping make our September event possible, and we'd like to tell you who they are.



Creating Hope Sponsors

Academy Roofing Inc.

Capital Sisters International,

PATRICIA FOLEY HINNEN

Core Contractors,

LEE LIPNISKIS

Creative Financial Staffing,

SHEILA DREW

FirstBank,

LEAH DIRKS

Klancke & Cook,

JILL KLANCKE

Sullivan Financial Planning, LLC,

KRISTI SULLIVAN

Building Promise Sponsors

Counseling Center of Cherry Creek,

JENNY GLICK

DYCO Diversified,

VANDA DYSON

LIV Sotheby's International Realty,

MELISSA RICHARDS

Lutz Zuber & Associates, LLC,

SHARI LUTZ

Ryan, Gunsauls & O'Donnell, LLC,

ELIZABETH MOORE

Helping Women Sponsors

Career Matters,

ANNE ANGERMAN

Hulse Law Firm, PC,

LAUREN HULSE

J Sequeira Agency,

JULIE SEQUEIRA

Juice Plus+,

LEIGH MILLER

Kitchen Traditions of Colorado,

Lutz Zuber & Associates, LLC,

SHARI LUTZ

Willoughby Law Group,

KELLY SNODGRASS

In-Kind Donations

Alexander Smith Design,

SANDY SMITH

Life Unstill Photography,

WILLY WILSON

Tips for Generating Business, from APW Member Jayne Sanders

Take purposeful action! That is the **#1 tip** I used to build my business when I moved to Colorado and I wanted to share some of the things that really worked for me.

Here are some actions you can take to build your business:

Search Groups

Search groups on **MeetUp.com** and attend as many as possible that resonate with you or seem to fit your client niche. When I first moved to Colorado, I attended 2-5 meetings a week for several months. I met some great women, generated leads and clients, made some great contributions, had fun, and made new friends. After attending several meetings for each group, it was easier for me to determine which were the best fit for my business and which fit me personally.



Join Organizations

Join organizations like the APW. Choose those that feel good and where you feel you can contribute the most. Pay attention to those whose members fit your client niche. I am a member of three organizations that I enjoy very much.

Prepare a 30-Second Commercial

You will come across a lot of new people and it's helpful to have a 30-second commercial prepared to convey what you are looking for. Mine was, "In addition to new clients, I am looking for speaking engagements and for people who would like to host an easy private event for their friends and earn a free hand analysis." Having a clear and direct approach allowed me to reach more people and help them discover their life purpose and ideal work. Win-Win!

Pursue Speaking Engagements

Pursue speaking engagements through other methods, such as web searches and referrals you get while networking. During your speaking engagements (and/or private events if appropriate), be sure to do 4 things:

1. **Offer content of value to the participants**
2. **Be fun and engaging**
3. **Communicate the benefits of your product or service**
4. **Make a special offer for that day only, but don't belabor it. Distribute a form for them to fill out and make it easy for them to buy.**

By the end of your presentation, if you've set things up properly with interest and value, many of the participants will want to know how to get more and how much it costs.

The key is to get out there and go for it. Exposure is the only way for potential clients to learn about you, and nothing beats personal face-to-face rapport. **Good luck!**

JAYNE SANDERS is a Scientific Hand Analyst and Purpose Mentor who helps people discover their innate life purpose, special gifts, and blind spots for more joy, fulfillment, and abundance. Reach Jayne at 303-828-8333, jayne@precisionwisdom.com, or www.precisionwisdom.com.

Public Affairs Meetings

The next **Public Affairs Committee meeting** will be on **Tuesday, May 9**. Our speaker will be **CHARLES HAMLIN, M.D.** Dr. Hamlin will speak about medical aid-in-dying and about the End-Of-Life Options Act passed by Colorado voters in December 2016. Dr. Hamlin is a member of the group Compassion & Choices, one of the largest nonprofit organizations promoting expanded options for the right to end one's life under certain circumstances. Whether or not you voted for the End-Of-Life Options Act and believe in medical assisted dying, it will be interesting to hear from a member of the medical profession about this topic.

Meetings are held at **Zaidy's Restaurant** at First Avenue and Adams Street in Cherry Creek, starting at 7:00 am for networking, 7:30 am for the speaker. Meetings usually wrap up at 8:30 am. Committee members eat while listening to the speaker, and the format is casual; you buy your own breakfast. If you're interested in attending or if you have any questions, please contact **NORA KELLY** at nvkesq@gmail.com or 303-377-5518.

Our Public Affairs Committee will go on summer hiatus in June, but we will be having a brainstorming session to prepare for our **fall program**:

Wednesday, June 28 from 12:00 pm to 1:30 pm
At the Office of **SHEILA DREW, Creative Financial Staffing**
1801 California St. Suite 2200, Denver, CO 80202

Please let us know if you'll be joining us by emailing **KERRY HAMMOND** at execdir@apwcolorado.org.



Join APW members and prospective APW members at upcoming Coffee Connections.

Wish you had more time with APW members? Join Coffee Connections! Grab a cup of coffee, tea or breakfast and join other APW members and prospective members to discuss business-related topics and network. Leave when you need to, our end time is approximate.

When: **Friday, May 19**, 8:30 to 10:00 am

Where: **Trompeau Bakery**, 2950 S. Broadway, Denver - 2 blocks south of Yale

RSVP: **LEIGH MILLER** at millerleigh13@gmail.com

When: **Friday, June 16**, 8:30 am to 10:00 am

Where: **Mangia Bevi Cafe**, 6363 S. Fiddlers Green Circle, Greenwood Village CO 80111

RSVP: **LAUREN KAPLAN** at lauren@thekaplans.com

When: **Friday, June 16**, 8:30 am to 10:00 am (end time is approximate)

Where: **Panera Bread** located at The Shops at Walnut Creek, 10450 Town Center Dr., Westminster, CO 80021

RSVP: **CHELSEY BURNS** at Chelsey@bemindfullyhealthy.com

Let's Hear From An APW Board Member

What's it like to sit on the APW Board? **KERRY HAMMOND** caught up with **GINNY TAYLOR**, owner of **A Better View Décor**, to find out a little bit more about what it means to be a Board Member.

Kerry: Tell us how long you have been involved in APW?

Ginny: I have been involved with the APW for the majority of my time as a business owner and I have had my window treatment and décor business for over 13 years now. At this point, the women of the APW act like a board of advisors to me. I know I can bounce ideas off these ladies. My peers at the APW consistently deliver candid feed back that I feel I can use, and it is a great environment that builds collaboration with casual conversation. As an entrepreneur, it is very reassuring to know that I am on the right track to continue to grow my business each year.

Continued on Page 8

[\[Back to What's Inside\]](#)

Luncheon Sponsors

University College University
of Denver

April 2017

Chrysta Bairre,
Live Love Work

March 2017

Leslie Garske,
AXA Advisors, LLC.

February 2017

Lee Weisbard, DDS
Weisbard Dental

November 2016

Patsy Butterfield
HM Brown Auto Brokers

October 2016

Leigh Miller, Juice Plus+

August 2016

Lee Lipniskis, Core Contractors

July 2016

Alliance Foundation

June 2016

Jill Klancke

Klancke and Cooke,
Attorneys at Law

April 2016

Pamela Foley, Well and Company

March 2016

Ky Agnew, CSA

PASCO-Personal Assistant
Services of Colorado

February 2016

Lorni Sharrow, Moye White

November 2015

Kristi Sullivan

Sullivan Financial Planning

October 2015

Cari Harris and Megan Henson
Etcetera

August 2015

Pamela Wilson

The Care Navigator

July 2015

Interested in becoming a Networking
Luncheon Sponsor? Call 303-368-4747

Corporate Members

KUAN YIN MEMBER

Harper Hofer & Associates, LLC

CERRID MEMBERS

Alexander Smith Design

Bauerle and Company, P.C.

Creative Financial Staffing

Eide Bailly

FirstBank

Lutz Zuber & Associates

Moye White LLP

REALART

Ryan, Gunsauls & O'Donnell, P.C.

University College University of Denver

Let's Hear From An APW Board Member

Continued from Page 7

Kerry: Do you remember why you joined?

Ginny: Sure! I had visited a few times over the course of five years. Then, during one lunch I was sitting at a table with the dynamic **ANNE MOORE**, who told me about different women she had gotten to know at the APW. I knew right away that I wanted to be a part of this diverse and powerful group of professionals. I joined on the spot, well, at the end of that lunch. I remember it was the May Member Appreciation Lunch and **DANA LYNCH** was the compelling and confident emcee. All of the Chairs of each committee were being recognized and I said to myself, 'I'd like to be a part of that.' The APW seemed to fit the bill for me, providing an opportunity to combine being philanthropic within the Denver Community and getting to know other professional women. I remember being impressed at how the APW helps local women with scholarships also.

Kerry: Tell us about the level of involvement you have had over your membership tenure.

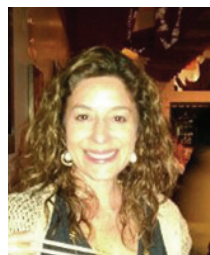
Ginny: After I joined, I attended the February Committee Fair and joined the Networking Committee. Meeting in the middle of the day worked great with my schedule and allowed me to get more involved. I am also a foodie so it was a great fit for me to research new restaurants within our community. It has also given me the ability to be more confident in speaking to large groups. Just this last year, a member of the Board recommended me as a candidate to serve on this level. I am excited to be on the Board, helping to steer the organization and enhance our current member benefits. I know that the more involved I get, the deeper my friendships will become and stronger, strategic business partnerships will be formed. I try to volunteer when we prepare meals for different women's communities around Denver and assist in the collection of basic daily necessities for these women. I also host a table of my clients at the September Helping Women + Changing Lives Fundraising Luncheon for the Alliance Foundation.

Kerry: Do you have any advice for new members?

Ginny: I guess I would say that any organization you join will reward you the more you can get involved. So join a committee or volunteer to serve a meal at Dolores Project. Perhaps you could host a table at the September Luncheon for your clients and friends, or shop for Christmas presents and help the Outreach Committee wrap them. You can always get out and play a little golf too. Whatever it is you decide to do, remember to attract what you expect, reflect what you desire, become what you respect, and mirror what you admire. Think how you are changing the future by being a part of this dynamic group of women. The APW makes a positive impact on so many women around the world and here locally, and it is important to continue to nurture this. I think that the advice I would give new members reads like a fortune cookie: "Big reward will come to those that seek collaboration."

Kerry: Thanks for taking time out of your busy day to chat!

Ginny: This was fun. Thank you, Kerry.



Ginny has owned **A Better View Décor** for over 10 years and enjoys helping people identify their personal style in the form of window treatments, bedding, pillows, upholstery, paint consultation, and just any advice on décor that she can share. She never charges consultation fees—all her advice is always free of charge and she just wants people to have a sanctuary that they love to spend time in. A Better View Decor wants to be known as THE premier resource for décor innovation products for all people.

Alliance Networking Opportunities

WHAT: NETWORKING EVENTS COMMITTEE MEETING

When: Tuesday, **May 2** and **June 6**, 11:30 am – 1:00 pm

Where: **Natural Grocers**, Colorado Blvd. and Evans

RSVP: **LYNNE AMERSON**, lynn@chasefield.co

WHAT: OUTREACH COMMITTEE MEETING

When: Wednesday, **May 3** and **June 7**, 5:30 pm

Where: **PAM FISCHER's** home, 2218 Franklin St.,
Denver, 80205

RSVP: **WILLY WILSON**, wilson@lifeunstill.com

WHAT: PUBLIC AFFAIRS COMMITTEE MEETING

When: Tuesday, **May 9**, 7:00 am Networking, 7:30, Speaker

Where: **Zaidy's** in Cherry Creek, 1st & Adams

RSVP: **NORA KELLY**, nvkesq@gmail.com or 303-514-3143

Speaker: **CHARLES HAMLIN, M.D.**

WHAT: MAY MEMBER APPRECIATION NETWORKING LUNCHEON

When: Thursday, **May 11**, 11:00 am – 1:00 pm (2-hour event)

Where: **Denver ChopHouse**, 1735 19th Street #100,
Denver 80202

Cost: Members \$35; non-members \$45

RSVP: **CLICK HERE** to Register. No walk-ins allowed.

WHAT: COFFEE CONNECTIONS—CENTRAL DENVER

When: Friday, **May 19**, 8:30 – 10:00 am

Where: **Trompeau Bakery**, 2950 S. Broadway, Denver,
2 blocks south of Yale

RSVP: **LEIGH MILLER**, millerleigh13@gmail.com

WHAT: JUNE NETWORKING LUNCHEON

When: Thursday, **June 8**, 11:30 am – 1:00 pm

Where: Location to be Determined

RSVP: Registration Link Coming Soon

Sponsor: **The Alliance Foundation**

WHAT: COFFEE CONNECTIONS—SOUTH

When: Friday, **June 16**, 8:30 – 10:00 am

Where: **Mangia Bevi Café**, 6363 S. Fiddlers Green Circle,
Greenwood Village CO 80111

RSVP: **LAUREN KAPLAN**, lauren@thekaplans.com

WHAT: COFFEE CONNECTIONS—NORTHWEST

When: Friday, **June 16**, 8:30 – 10:00 am

(end time is approximate)

Where: **Panera Bread** located at The Shops At
Walnut Creek, 10450 Town Center Dr.,
Westminster CO 80021

RSVP: **CHELSEY BURNS**,
Chelsey@bemindfullyhealthy.com

WHAT: MEMBER SUPPORT COMMITTEE MEETING

When: Wednesday, **June 21**, 11:00 am

Where: **Café France**, 8081 E. Orchard Rd,
Greenwood Village, CO 80111

RSVP: **LAUREN KAPLAN**, lauren@thekaplans.com

SAVE THE DATE

Our next APW social networking event is at

Where: **TOPGOLF!**

10601 E Easter Ave, Centennial, CO 80112

When: Thursday, **June 22** from 4:30 pm to 7:30 pm (4:30 pm to
5:30 pm–Networking, 5:30 pm to 7:30 pm–Golf and
continued networking)

Cost: \$25 for Members and \$30 for Non-Members

Includes heavy appetizers, 1 drink ticket, and 2 hours of golf

Make sure to mark your calendar NOW! You won't want to miss this
amazing event! Networking, Drinks, Fabulous Appetizers and...GOLF!

All for the low price you'd pay for just networking anywhere else.
Whether you're a golf fanatic, a golf hacker or even a non-golfer,
this event offers something for everyone.

**CLICK HERE
TO REGISTER NOW**



Updates and News from Our Outreach Committee

The **Outreach Committee** is the community service arm of The Alliance of Professional Women; it provides volunteer opportunities for members of the APW that promote health, welfare, education, and employment of underserved women and children in our community.

Two Ways to Get Involved:

- 1** The Outreach Committee is dedicated to joining the **2017 School Supply Drive to benefit Arapahoe House**. You can help send 200 Arapahoe House kids to school with all they need for a successful year. Just shop for the items below and drop them off at an APW Networking Luncheon, or other conveniently location drop-off locations. It's that easy!

Supplies needed:

- A backpack
- Loose leaf paper
- Composition books
- Folders
- Color pencils
- Markers
- Crayons
- Pencil box
- Mechanical pencils
- Ruler
- Highlighters
- Pink erasers
- Index cards (3x5)
- Scissors (blunt)
- Scissors (pointed)
- Lysol/Clorox wipes
- Glue Sticks
- Elmer's glue
- Calculator

Deadline for drop off is June 25.

You can bring your donations to an APW Networking Luncheon or Drop them off at the following locations:

GINA MILLER / Bauerle and Company, P.C. / 303-759-0089
7887 E Belleview Ave. Suite 700
Denver, CO 80111

CARI HARRIS / 303-332-2047
2751 Lafayette St.
Denver, CO 80205

For additional locations, contact **KERRY HAMMOND** at execdir@apwcolorado.org.

- 2** The APW Outreach Committee is **looking for volunteers to support Girls on the Run of the Rockies**. On May 13, over 1,000 Girls on the Run participants will join their coaches, running buddies, and community runners to participate in the **Girls on the Run 5K at Cherry Creek High School**.

APW members and friends have FOUR volunteer opportunities:

- 1. The APW is a water stop sponsor.** This is a really fun place to volunteer on race day. Outreach is looking for a minimum of 12 volunteers for this opportunity. Please email **GINA MILLER** at apwcommunityoutreach@gmail.com if you would like to join the water stop volunteer group.
- 2. Wacky hair booth.** APW members will also be providing a booth and creating wacky 'dos for the GOTR participants. Come out and show your creative side! Outreach is looking for a minimum of 6 volunteers for this opportunity. Please email **GINA MILLER** at apwcommunityoutreach@gmail.com if you would like to join the booth group.
- 3. Want to Run? REGISTER ONLINE HERE.**
Use discount code APW5K for a \$5 discount.
- 4. GOTR also needs running buddies on race day.** These are women that can be matched up with a team that needs a few more adults to run and support their girls on race day. If you are interested in being a running buddy, **PLEASE SIGN UP HERE**. You will also need to register for the 5K via the link provided above in item #3.

Directions and Parking:

Parking is available at Cherry Creek High School South and West lots. Access lots via Yosemite and Campus Drive. Race start is on Union Blvd on the north side of Cherry Creek High School. NOTE: DAM ROAD will be closed the morning of the race. You will need to access Cherry Creek High School from Yosemite.

The Race starts at 9:00 am. For those that sign up to volunteer, more information will be sent closer to the event. All this information and more about the 5K can be found on the Girls on the Run website www.girlsontherunrockies.org.

Come out and join the fun!

Member News & Information

The Outreach Committee has been busy giving back to the community

Delores Project. The group hosted a dinner for the **Delores Project on March 7**, feeding approximately 50 women. We also logged on to the Delores Project's Amazon wish list and purchased everything they listed. We provided much-needed supplies and even small furniture items for this great organization.

New Legacy Charter School. Recently, The Outreach Committee put on a **Senior Photo Extravaganza** for students at **New Legacy Charter School**. The school provides high school education AND childcare for pregnant or parenting teens, most of whom live below the poverty level. This year the school has nearly 30 students graduating and a group of six photographers—led by APW Member and Outreach Co-Chair **WILLY WILSON** of **Life Unstill Photography**—and a half dozen volunteers, created senior photos for 16 of those soon-to-be-grads. It was a fun afternoon with a bunch of really wonderful people.

Having your senior portrait made is a pretty normal thing for most American kids, but kids who have children in their teens are not living a typical senior experience. They are dealing with the world as adults, ready or not. Willy explains it by saying, "As photographers, there aren't tons of ways that we can give back to the community through our actual services. However, this little project, providing this fun, old-fashioned, youth-focused, all-about-you experience was something we could give these kids and provide our services in a way that we hope will give them joy and happy memories they can keep for a lifetime." Mission accomplished, Willy!

We have lots of upcoming Outreach volunteer opportunities, **check out the Committee's Year-at-a-Glance** and **mark your calendars**.

YEAR AT ONE GLANCE					
January	February	March	April	May	June
NO OUTREACH MEETING	1 OUTREACH MEETING	1 OUTREACH MEETING 7 Delores Dinner (Willy) 9 School Supplies (Luncheon) 11 NLCS Senior Photos 18 NLCS Rain Date NLCS College Tour	5 OUTREACH MEETING 12 NLCS - MSUD Visit 13 School Supplies (Luncheon) TBD NLCS College Tour	3 OUTREACH MEETING 10 NLCS - UCD Visit 11 School Supplies (Luncheon) 13 GOTR Race 27 Delores Stockup Shop 30 Delores Dinner (Beth)	7 OUTREACH MEETING 8 School Supplies (Luncheon) Outreach Poster at Luncheon 23 Indian Tree Rally for the Cure
July	August	September	October	November	December
5 NO OUTREACH MEETING 13 School Supplies (Luncheon) TBD Arapahoe House School Supplies Delivery	2 OUTREACH MEETING 29 Delores Dinner (Alina)	6 OUTREACH MEETING 14 HW+CL Luncheon TBD CASA Birthday Shopping Pam & Gina to shop	4 OUTREACH MEETING 4 CASA Birthday Bag Stuffing During Meeting	1 OUTREACH MEETING 4 Delores Stockup Shopping 7 Delores Dinner (Judy)	6 OUTREACH MEETING 6 Holiday Wrapping Party

New Members

AMANDA JAMISON, LPMG Holdings, amanda_jamison@live.com

ERIN KAVANEY, Madison & Company, erin@bswrealestate.com

New Member Fun Facts

AMANDA JAMISON, LPMG Holdings, amanda_jamison@live.com

- 1. Why did you join the Alliance of Professional Women?** I joined in hopes of being empowered by other women and to push myself out of my comfort zone in networking events.
- 2. What are your hobbies?** I enjoy singing in a choir, CrossFit, being outdoors, and going on adventures.
- 3. What is your position/business?** I am a Senior Accountant at LPMG Holdings.
- 4. What is something that few people know about you?** I play the tenor saxophone.

Anniversaries

The Alliance wishes to **recognize** and **thank** the following women who joined The Alliance of Professional Women in May or June. We greatly appreciate your continued support of our organization.

10 YEARS

KRISTI SULLIVANSullivan Financial Planning, LLC

9 YEARS

PAM FISCHERDesign A La Carte

8 YEARS

CHELSEY BURNSMindful Health Coaching, LLC

7 YEARS

JULIE IZARDLutz Zuber & Associates, LLC

6 YEARS

GINNY TAYLORA Better View Décor

LAUREN KAPLANRodan + Fields Dermatologists

LEAH DIRKSFirstBank

5 YEARS

JOANNA JOHNSONE2 Business Gifts

PAMELA WILSONThe Care Navigator

4 YEARS

ABBE PENSACKAbbe Pensack Insurance, Ltd

KIRSTAN BORNELocation Innovators LLC

MICHELLE ROLLPark Hill Bookkeeping Services

TERESA GRAYPrincipal Financial Group

LEIGH MILLERJuice Plus+

3 YEARS

RACHEL CLARK

JAYNE SANDERSPRECISION WISDOM, INC

CARI HARRISXcessorize LLC

ANN WOLTA BLACKSTONE ..LPGA

2 YEARS

GABRIELLA SANDOVALColorado Department of
Labor & Employment

1 YEAR

CHRISTA GROVERDahl House Design, LLC

JENNIFER SCHNAFFNERWilloughby & Associates

KIM DUSHINSKIPremier Roofing Company

CINDY WOJTOWICZArbonne

LESLIE MILLERLeslie Miller Law

LAURA SOUTHWARDEKS&H

MARISA BARSLUNDEide Bailly

NICOLE GUSSICKBusiness Strategies Hub

CAROL LATHROPIMESevents

Alliance Thanks!

We want to **thank JENNY GLICK** of **Counseling Center of Cherry Creek**, jenny@counselingcenterofcherrycreek.com. Jenny was our 2016-2017 print sponsor for the APW Communique newsletter. Thanks to her, we were able to offer printed copies of the newsletter at our networking luncheons and New Member Orientations.

In March we lunched at **SOL Cocina** in **Cherry Creek**, a new-to-us restaurant. Our hosts were Networking Committee Co-Chair **PAM FOLEY** of **REnew** and **REdo Holistic Décor**, pam@renewandredo.com and **MARISSA PEACOCK** of **Arapahoe Sign Arts**, mpeacock@arapahoesignarts.com.

Our **Luncheon sponsor** was Networking Committee Member **CHRYSTA BAIRRE** of **Live Love Work**. Chrysta is a Career Coach and started off by telling us about the path that led her to where she is today. She explained how her journey led her to realize that she needed to help people reach their goals as she had. Chrysta was inspiring!

We gave away some great door prizes and want to thank the following for providing door prizes for our guests: Our Sponsor **CHRYSTA BAIRRE** donated a coaching certificate, **BRENDA MAHONEY** donated a Cabi scarf, **LEIGH MILLER** donated a Juice Plus+ sample pack, **RENE DiBENEDETTI** donated a flower arrangement, and we also gave away tickets to History Colorado for the family.

In April we headed north to **West 29th Restaurant**, another new-to-us location. We had the entire restaurant to ourselves and enjoyed a presentation from our Sponsor, **University of Denver University College**. We heard from **ALYSSA ANDERSON**, alyssa.anderson@du.edu, **LAURA FROSETH**, Laura.Froseth@du.edu, and **TRACEY MUOIO**, Tracey.Muoio@du.edu. University of Denver University College is one of our APW Corporate Members and we enjoyed hearing about the programs available for advanced degrees at the school. The ladies asked attendees to write down something they would like to learn this year, and we enjoyed listening to the responses and sharing our own ideas with others at our table. It's never too late to learn something new.

Our luncheon hosts were Networking Committee Co-Chair **LYNNE AMERSON** of **Chasefield Capital**, lynne@chasefield.co and **KRYSTAL THOMPSON** of **The Catalyst Group, LLC**, krystal@catalystgroupmarketing.com.

LOOKING FOR A SPONSOR

We're looking for a sponsor for 2017-2018 so that we can continue to offer the newsletters in print form. If you're interested in being our sponsor, please contact **KERRY HAMMOND** at execdir@apwcolorado.org.

We also thank the following for providing door prizes for our guests: The **LADIES at DU** donated a FREE Enrichment Course, **GINNY TAYLOR** donated a hardcover book: Vanity Fair 100 Years, **JILL KLANCKE** donated two tickets to Klancke & Cook's next "Mom Always Loved You Best" Seminar, **RENE DiBENEDETTI** donated a flower arrangement, and we gave away History Colorado tickets for the family.

New Member Referrals

Sending out huge **thanks** to our members for all the great new referrals to The Alliance of Professional Women!

We appreciate all of you for sharing our wonderful organization and are pleased to run your business card ad, as a small token of our great appreciation, in this or an upcoming edition of the Communique newsletter.

We also thank **SHERE CHAMNESS** for attracting new members to our organization through our APW website.

Receive a **FREE** ad for referring new members to the APW! In an organization like the APW, we depend on referrals to increase our membership. As a small thank you for referring a new member to The Alliance, you will receive a complimentary business card ad in the Communique.

Business Sources

THE ALLIANCE OF PROFESSIONAL WOMEN'S COMMUNIQUE

DESIGN

INTERIOR DESIGN/DESIGN BUILD/STAGING/CONSTRUCTION MANAGEMENT

Dahl House Design, LLC

CHRISTA GROVER

Founder + Designer

303.995.7796 | christa@dahlhousedesignllc.com

www.dahlhousedesignllc.com

LUTZ ZUBER

+ associates, llc

litigation support + business valuation
+ consulting

633 17TH STREET SUITE 1640

DENVER, CO 80202

303.407.8016 MAIN

IT ALL ADDS UP TO US.

www.lzacpa.com

TRACIE ROMERO

ACCOUNT EXECUTIVE ■

Tracie.Romero@designhealth.com

D: 720-250-9434 O: 888-906-4288 F: 800-333-8319

56 Inverness Drive East, Suite 250
Englewood, CO 80112

www.designhealth.com

IMES events

a division of IMES Marketing LLC

Carol Lathrop, CMP
Chief Event Officer (CEO)

2133 Coronado Pkwy N., Unit D
Thornton, CO 80229
Phone: 303-332-2547 • Fax: 815-717-9674
Email: Carol@IMESevents.com

720.841.0779



SHERI CHAMNESS

5390 Mohawk Road
Littleton, CO 80123
www.Planet-Realart.com
www.CozmicSeeds.com

shere@planet-realart.com



Founded by CFS firms

Creative Financial Staffing

1801 California St., Suite 2200
Denver, CO 80202
www.cfstaffing.com

Sheila Drew
303-831-5006
sdrew@cfstaffing.com

Grace Baker
303-831-5007
gbaker@cfstaffing.com

Katie Schexnider
303-831-5002
kschexnider@cfstaffing.com

Planning for Peace of Mind



Trusts & Estates Attorneys

- Estate Planning & Probate
- Protecting Against Financial Fraud
- Planned Giving

Moye|White^{LLP} Attorneys at Law

contact Loni Sharrow
6 Market Square 6th Floor 400 6th Street
Denver CO 80202 486
tel 303 292 2900 fax 303 292 45 0
www.moyewhite.com

CampExperience™

Amazing Women Luxury Retreats
Camp Experience....Designed for You!

www.CampExperience.com

Business Sources

THE ALLIANCE OF PROFESSIONAL WOMEN'S COMMUNIQUE



CENTENNIAL

*Serving the communities of
Southeast Suburban Denver*

Amy Lane

Owner

T 303 957 3100

M 303 332 5673

E alane@homecareassistance.com

8200 S. Quebec Street, Suite A-5
Centennial, Colorado 80112

www.CentennialHCA.com

*"The easiest way to add 27 different
raw fruits, vegetables & berries
to your diet daily."*



"Inspiring Healthy Living Around the World"



L. Leigh Miller

C: 720-272-2853

MillerLeigh13@gmail.com

Miller.JuicePlus.com



LEE WEISBARD D.D.S.

Excellence in Dentistry

303.773.3373 TEL

303.773.3380 FAX

www.weisbarddental.com

5460 S. Quebec St., #390, Greenwood Village, CO 80111



Leslie S. Garske

Financial Professional

Leslie.Garske@axa-advisors.com

Tel: (303) 892-5700

Cell: (720) 635-2686

AXA Advisors, LLC

8742 Lucent Blvd, Suite 600

Highlands Ranch, CO 80129



AXA ADVISORS

redefining / standards®

Strategic focus HAS NOTHING TO DO WITH ONE'S eyesight.

WHERE LITIGATION AND VALUATION INTERSECT WITH
FORMIDABLE EXPERTISE, YOU'LL FIND THE PROFESSIONALS
OF HARPER HOFER & ASSOCIATES.

WHEN THE STAKES ARE HIGH, OUR ANALYSIS IS ON POINT,
DELIVERING STRATEGIC, FOCUSED, MEASURABLE RESULTS.

NEED TO GET TO THE HEART OF A COMPLEX MATTER?

WE TELL THE STORY OF THE MONEY, IN FOCUS.

THERE'S STRENGTH IN NUMBERS.

harperHofer

& ASSOCIATES, LLC

MEMBER OF FINANCIAL CONSULTING GROUP, L.C.

FINANCIAL CONSULTANTS IN VALUATION, LITIGATION AND MARITAL DISSOLUTIONS

303.486.0000 www.MONEYTALKSWETRANSLATE.COM



Hulse Law Firm

Family Law | Estate Planning

*Providing Families with compassionate legal
services tailored to their individual needs.*



Please call to schedule
your free consultation today

Conveniently in Littleton

720-773-2900

hulselawfirm.com

info@hulselawfirm.com

We specialize in Family Law
• Divorces • Child Custody • Child Support
• Wills and Estate Planning

Business Sources

THE ALLIANCE OF PROFESSIONAL WOMEN'S COMMUNIQUE

Park Hill Bookkeeping Services

Your Partner in Business

Michelle Roll

Small Business Specialist

mroll@parkhillbookkeeping.com
www.parkhillbookkeeping.com

cell 303-668-0343
fax 303-321-3227

a **betterview** *décor*
Window Treatments ~ Upholstery ~ Bedding

Ginny Taylor
Window Treatment
Expert & Décor
Consultant

720.333.6934
ginny@ABetterViewDecor.com
aBetterViewDecor.com



Jenny Glick, MA, MS, LMFT

Counseling Center of Cherry Creek
Owner | Licensed Marriage Therapist

323 Detroit St., Denver, 80206
call direct 720.457.3342
Schedule 24/7 online
CounselingCenterOfCherryCreek.com

Decide. Show up. Transform.
jenny@jennyglicklmft.com

Mary Ann Littler
CEO



**Peak To Peak
Business Strategies**

Business Coaching & Consulting

mlittler16@gmail.com
303-748-3783 (cell)
303-663-2722 (office)
www.peaktopeakbusinessstrategies.com

Master's & Certificates
Online & Evenings
For Busy Adults

Marketing · IT · Healthcare
GIS · Leadership · HR · Environment



universitycollege.du.edu

**IMPACT
YOUR
WORLD**



CPAs & BUSINESS ADVISORS

Laura Srsich, CPA

Tax Partner

T 303.459.6740

M 303.980.5029

lsrsich@eidebailly.com

440 Indiana St., Ste. 200
Golden, CO 80401-5021

3i Law

Nicoal C. Wolfe
Attorney

3900 E. Mexico Avenue
Suite 530
Denver, CO 80210
P: 303-481-6360
F: 303-481-6310
nwolfe@3iLaw.com

www.3iLaw.com



Melinda C. O'Rourke, MD

4855 Ward Rd. Ste 300, Wheat Ridge, CO 80033

720-583-1826 | info@essencelaser.com

Business Sources

THE ALLIANCE OF PROFESSIONAL WOMEN'S COMMUNIQUE



Katarina Conway
 LuLaRoe Fashion Consultant
 303.947.3745
 LuLaRoebyKatarina@gmail.com
 Katarina's LuLaRoe Addicts!

Host a Pop-Up Boutique & Earn FREE Clothes!

LULAROE.COM



Ryan, Gunsauls & O'Donnell, P.C.
 Certified Public Accountants

Elizabeth B. Moore, CPA, MTX
Uyen T. Pavelis, CPA
Katherine T. Moeller, CPA

5590 East Yale Avenue
 Suite 201
 Denver, Colorado 80222
 Tel 303.758.5558
 Fax 303.756.1741
 www.rgo.cpa.com



Stacy M Hanson
 Financial Advisor
 9032 W 88th Avenue
 Westminster, CO 80005
 303-420-9104

Edward Jones
 MAKING SENSE OF INVESTING

Leah Dirks
 Senior Vice President - Littleton

FirstBank
 101 West County Line Road
 Littleton, Colorado 80129

T 303 347 5901 F 303 347 5927
 leah.dirks@efirstbank.com
 efirstbank.com NMLS ID #: 566178



CORE
 CONTRACTORS
 ROOFING SYSTEMS

Established in 2001

Lee Lipniskis
 Operations Manager

cell: 303-881-8464
 office: 303-295-2220
 fax: 303-477-5557
 LLipniskis@coredoes.com

BBB - Denver/Boulder
 Torch Award
 Winner
 2014 Medium Size Business A+



KLANCKE & COOK
 Attorneys at Law

Business, Real Estate, Wills,
 Trusts, Estate Planning, Probate

Jill Klancke
 2833 S. Colorado Blvd
 Denver, CO 80222
 jill@klanckecook.com

303-5840500
 303-691-0555

Changing the Way You View Attorneys



Rene's
 MAISON DES FLEURS

1462 South Broadway~Denver~Colorado~80210
 TEL 303-733-1978 FAX 303-733-1979

Rene@RenesMaisondesFleurs.com
 www.RenesMaisondesFleurs.com



Madison Kuebler
 Pre-Planning Advisor

Olinger Mortuaries and Cemeteries
 7777-A W. 29th Ave.
 Wheat Ridge, CO 80033
 501-593-6188
 Fax 303-274-0915
 Madison.Kuebler@DignityMemorial.com
 www.DignityDenver.com



Business Sources

THE ALLIANCE OF PROFESSIONAL WOMEN'S COMMUNIQUE



Xcessorize, LLC
For the Fashion Savvy Woman!
Cari Harris
Women's Designer Fashion Sales/Owner
2751 Lafayette St.
Denver, CO 80205
(303) 964-0774
(303) 332-2047 cell
timirac4@gmail.com
www.etcetera.com

TAM
Trece Alfrey Musat P.C.
Attorneys at Law

Laura A. Hass
Attorney

633 17th Street, Suite 2200
Denver, Colorado 80202
p. 303.292.2700
f. 303.295.0414

lhass@tamlegal.com
www.tamlegal.com



Fuller | Sotheby's
INTERNATIONAL REALTY

MELISSA RICHARDS
Broker Associate

303.520.0926
melissa.richards@sothebysrealty.com
fullersothebysrealty.com



THE CATALYST GROUP, LLC.
Krystal Thompson 720.394.8959
krystal@catalystgroupmarketing.com
-Let us be your catalyst-



INSPIRENCE
BUSINESS SERVICES

Alina Nikishina, CPA
VP Firm Management - Senior Accountant
1860 West Littleton Blvd. | Littleton, CO 80120
p: 303.763.1832 | f: 303.763.1848
alina.nikishina@inspirence.com
www.inspirence.com



Bauerle
AND COMPANY
CERTIFIED PUBLIC ACCOUNTANTS

Ann Broderick, CPA
Angelia McGill, CPA
Andra Blanariu
Gina Miller
Lisa Storey, CPA

7887 E. Belleview Ave., Suite 700
Denver, Colorado 80111

MAIN: 303.759.0089
FAX: 303.759.2189

WWW.BCDENVER.COM

branding | print media | advertising | web design | packaging



**We explore, visualize and
create design solutions
that drive results.**

Creative partnerships produce results.

www.alexandersmithdesign.net • [303] 759-0401



calendar of events

You can now find an RSVP link to upcoming Alliance Events on our homepage! Go to www.apwcolorado.org and click on the bold RSVP link – it will take you directly to the BlackTie RSVP page for the event for ON-LINE REGISTRATION See PAGE 9 for event information, event codes or contact for the event.

MAY 2017

S	M	T	W	T	F	S
	1	2 Networking Events Committee Meeting 11:30 am - 1:00 pm, Natural Grocers, Colorado Blvd and Evans, LYNNE AMERSON lynne.amerson@myfw.com	3 Outreach Committee Meeting 5:30 pm Home of PAM FISCHER , 2218 Franklin Street, Denver 80205 RSVP - WILLY WILSON wilson@lifeunstill.com	4	5	6
7	8	9 Public Affairs CM 7:00 - 7:30 am, Speaker - 7:30 Zaidy's of Cherry Crk NORA KELLY nvkesq@gmail.com	10	11 Member Appreciation Networking Luncheon 11:00 am - 1:00 pm Denver ChopHouse CLICK HERE to register	12	13
14 MOTHER'S DAY	15	16	17	18	19 Coffee Connections - CD 8:30 - 10:00 am, Trompeau Bakery LEIGH MILLER millerleigh13@gmail.com	20
21	22	23	24	25	26	27
28	29 MEMORIAL DAY	30	31			

For more event information see PAGE 9 or visit www.apwcolorado.org

JUNE 2017

S	M	T	W	T	F	S
				1	2	3
4	5	6 Networking Events Committee Meeting 11:30 am - 1:00 pm, Natural Grocers , Colorado Blvd and Evans, LYNNE AMERSON lynne.amerson@myfw.com	7 Outreach Committee Meeting 5:30 pm Home of PAM FISCHER , 2218 Franklin Street, Denver 80205 RSVP - WILLY WILSON wilson@lifeunstill.com	8 Networking Luncheon 11:30 am - 1:00 pm Location TBD, RSVP Link coming soon	9	10
11	12	13	14	15	16 Coffee Connections South 8:30 - 10:00 am, Mangia Bevi Café , LAUREN KAPLAN lauren@thekaplans.com Coffee Connections-NW 8:30 - 10:00 am, Panera Bread Chelsey@bemindfullyhealthy.com	17
18 FATHER'S DAY	19	20	21 Member Support Committee Meeting 11:00 am, Café France , Greenwood Village LAUREN KAPLAN lauren@thekaplans.com	22	23	24
25	26	27	28	29	30	